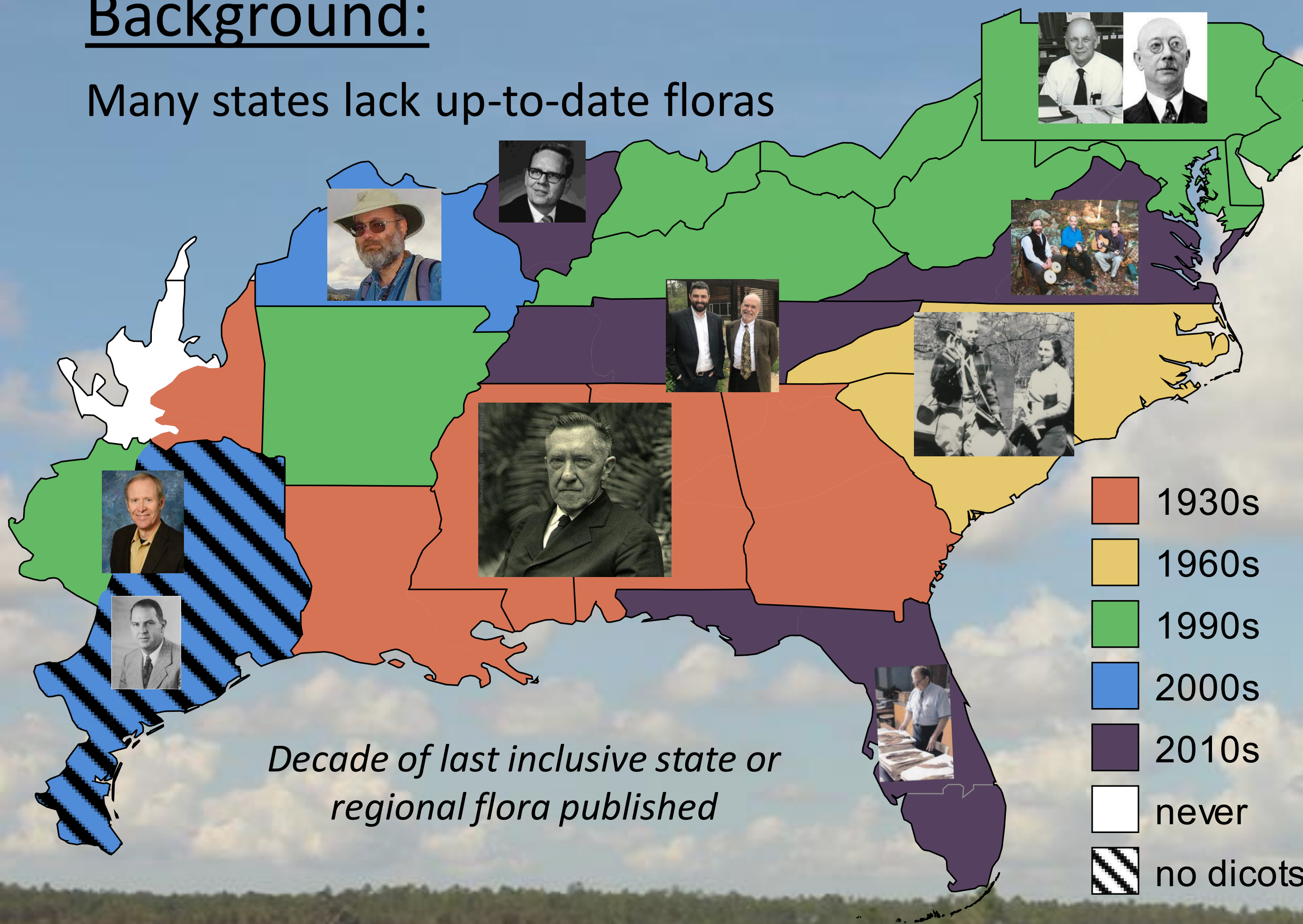




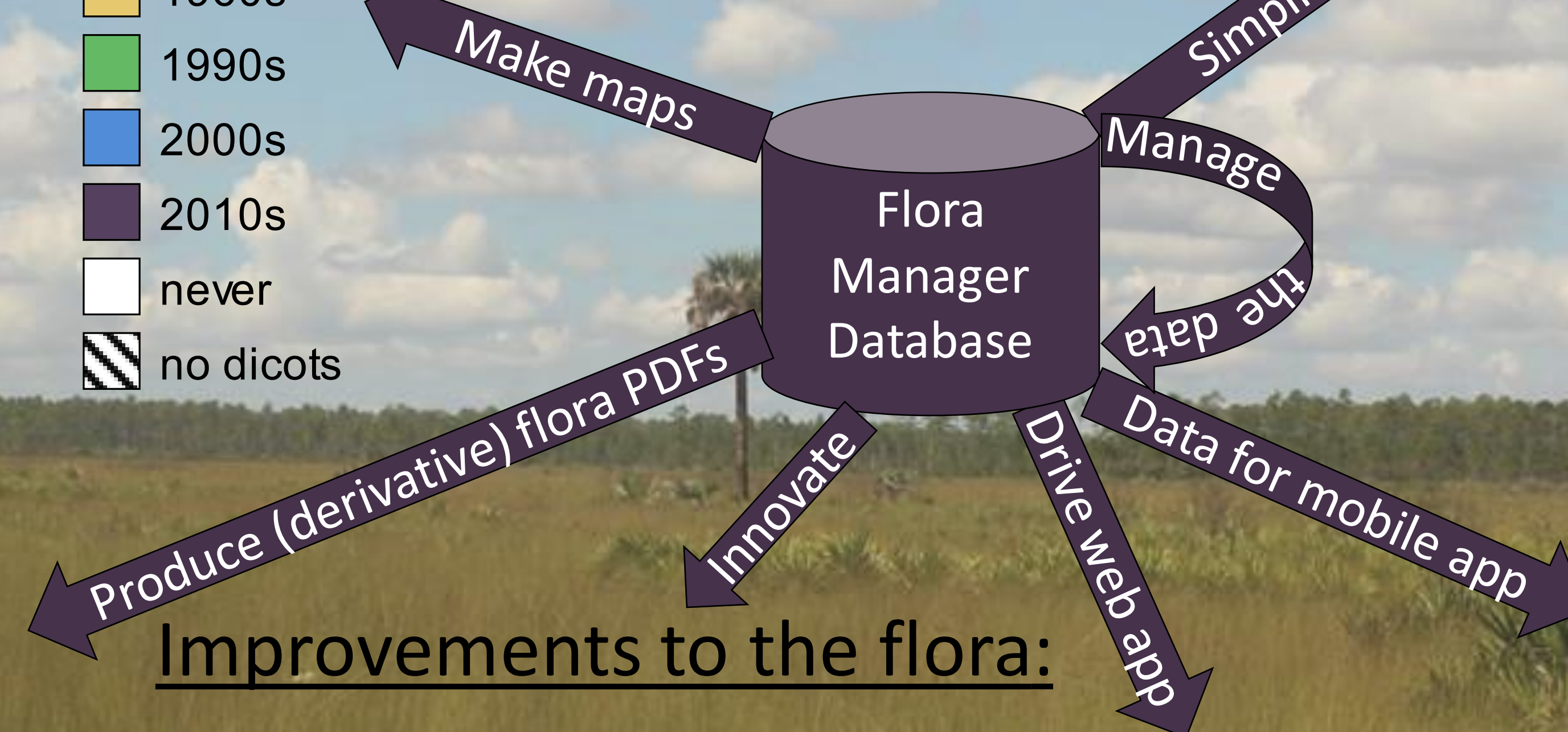
Background:

Many states lack up-to-date floras



Strong demand for modern synthesis of floras and botany research for the full region and state derivative floras

- The 2022 Flora of the Southeastern US includes 7,521 native and 3,209 alien plant taxa (**total: 10,730**)
- ~750 Southeastern vascular plant species have been named since 1970 (~10% of the native flora)
- Incorporates thousands of cited data sources from taxonomic research, monographs, floristics, and citizen science observations.



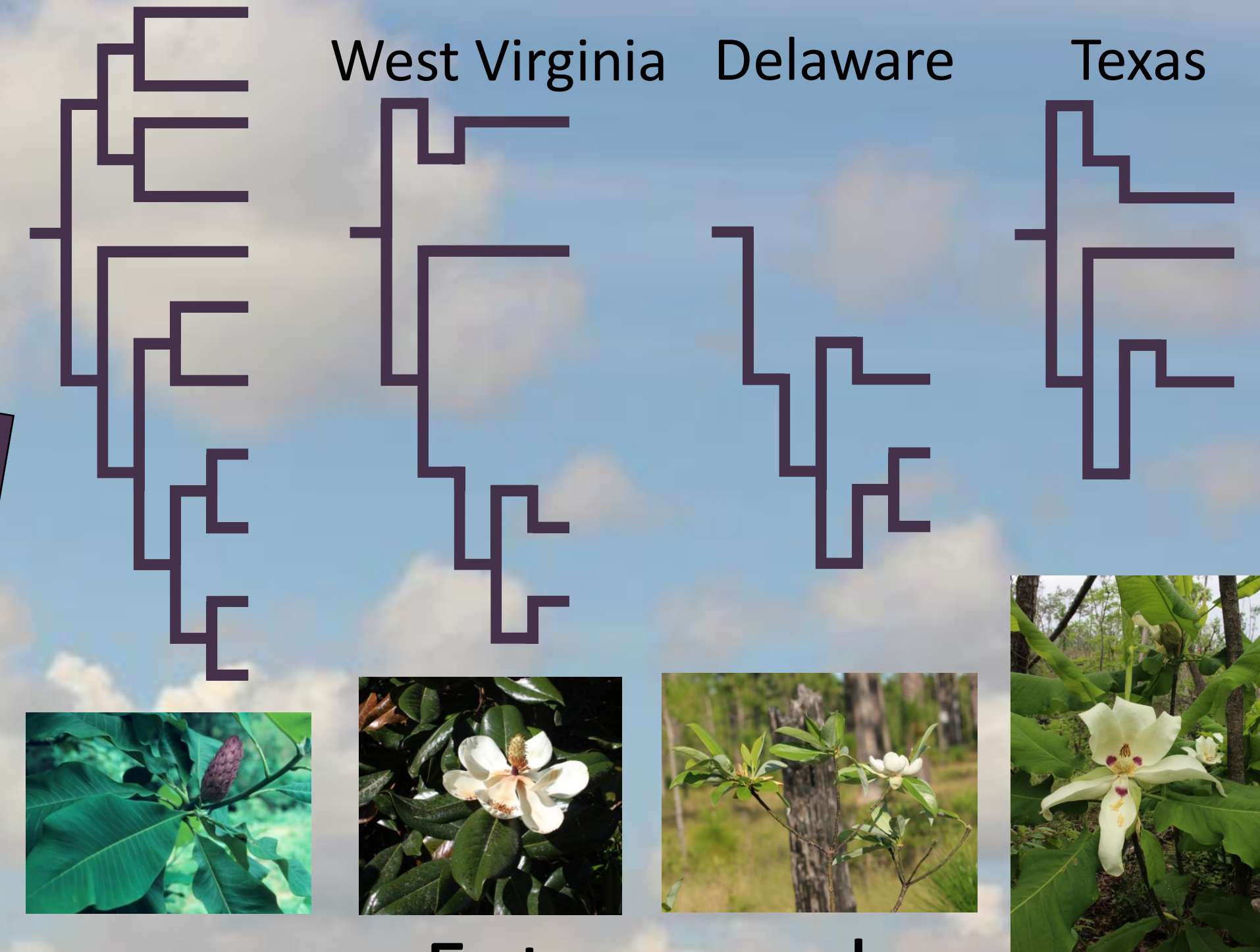
Full Flora

Simplified *Magnolia* dichotomous keys in state derivative floras

West Virginia

Delaware

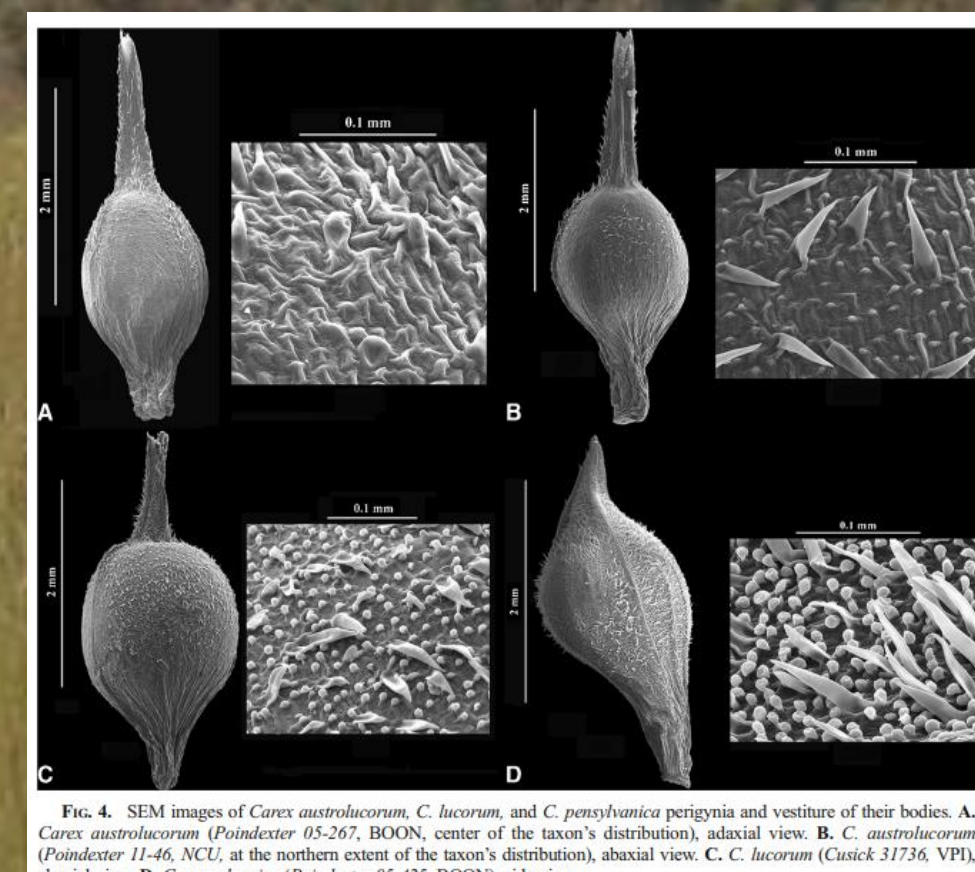
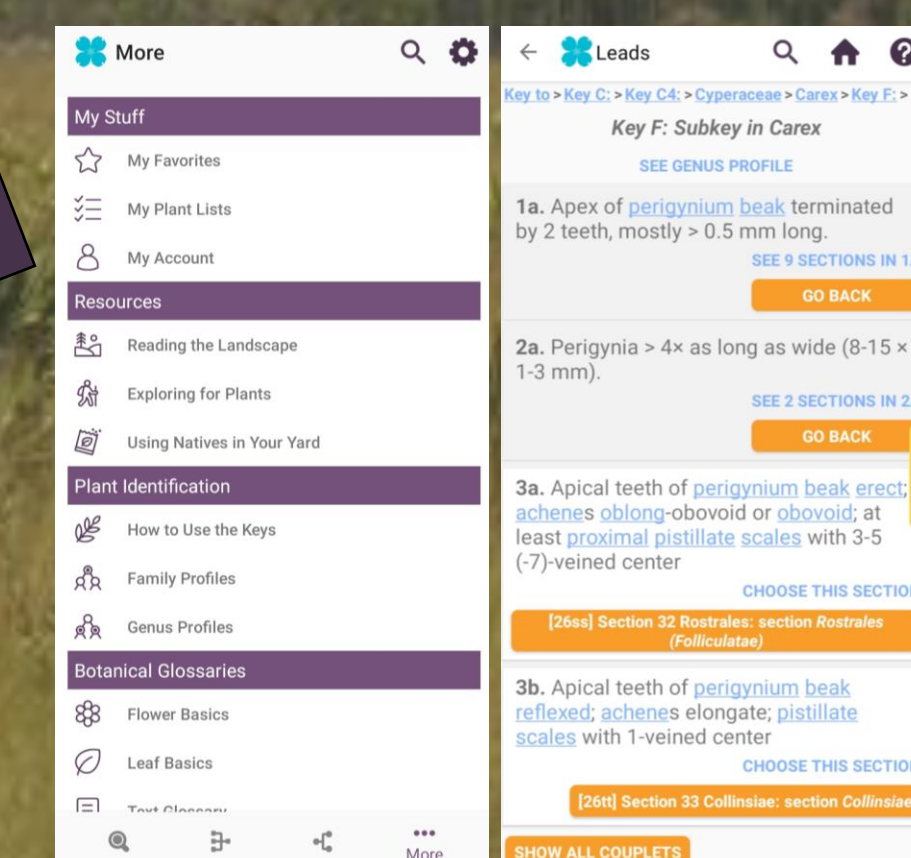
Texas



Future work:

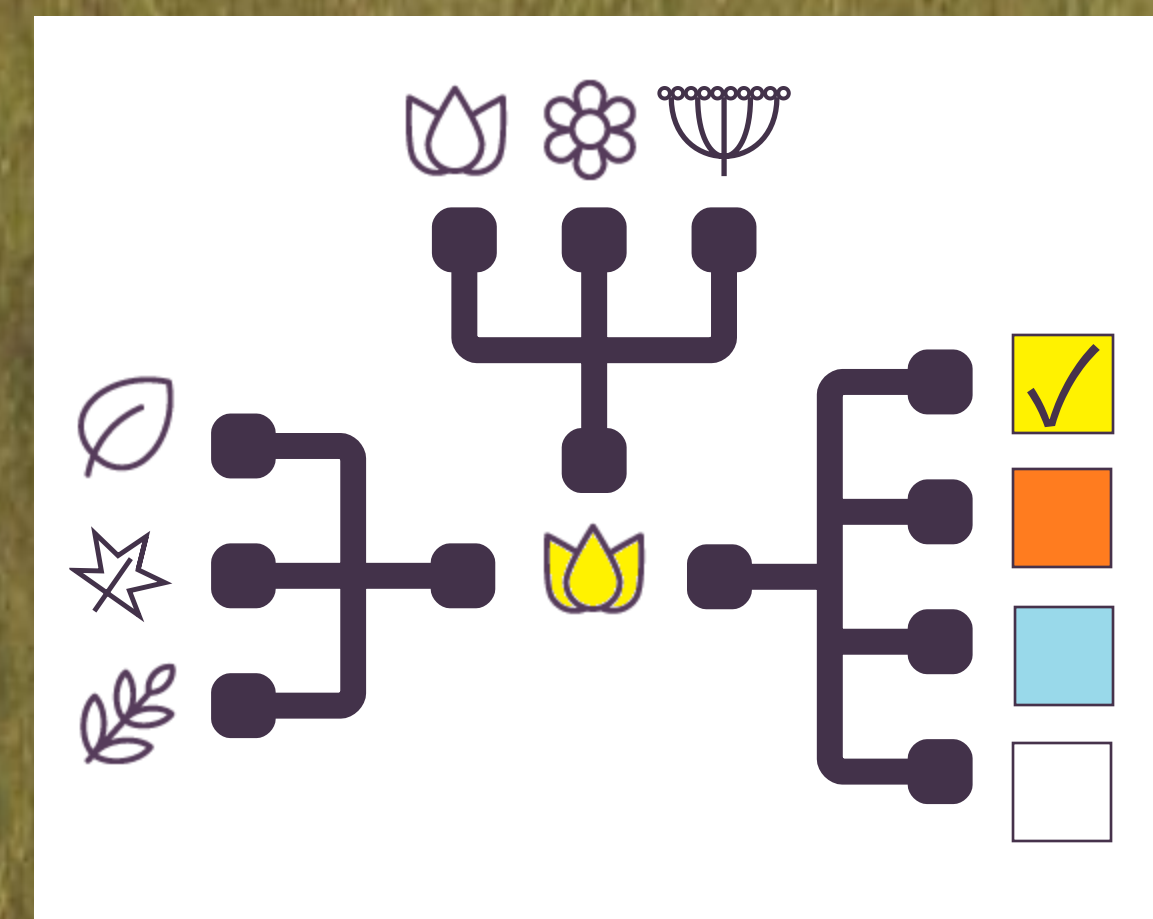
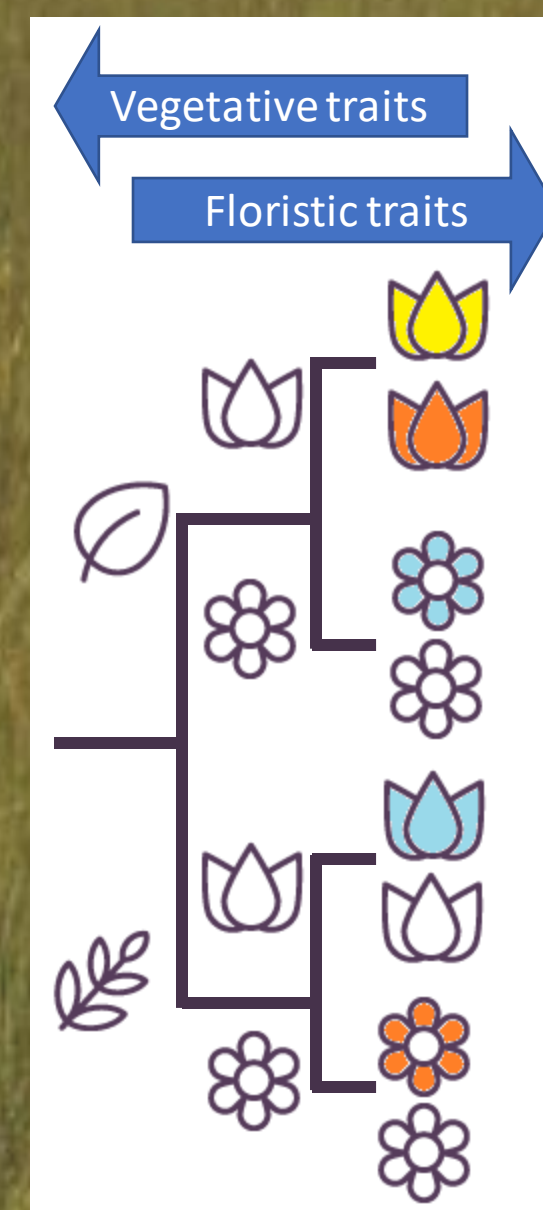
App improvement

More research



Traditional **dichotomous keys** are ordered and you can't skip leads. We place flowering traits later in the key to help ID plants vegetatively.

Graphic keys are interactive, unordered; all questions are optional, and the number of options can vary. A single easily observed trait may lead to an ID.



Diagnostic images in flora keys, a flora web app

Flora of the Southeastern United States
2022 Edition

Key F: Subkey in Carex

1 Apex of perigynium beak terminated by 2 teeth, mostly > 0.5 mm long.

...2 Perigynia > 4x as long as wide (8-15 x 1-3 mm).

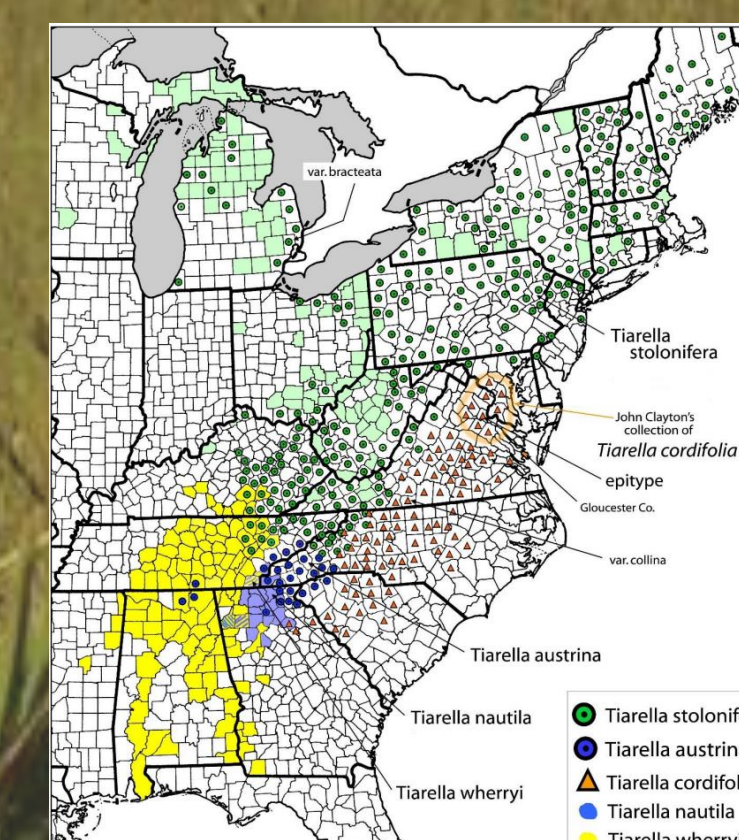
...3 Apical teeth of perigynium beak erect; achenes oblong-obovoid or obovoid; at least proximal pistillate scales with 3-5 (-7)-veined center
[Key to Carex, \[26ss\] Section 32 Rostrales: section Rostrales \(Folliculatae\)](#)

...3 Apical teeth of perigynium beak reflexed; achenes elongate; pistillate scales with 1-veined center
[Key to Carex, \[26tt\] Section 33 Collinsiae: section Collinsiae](#)

...2 Perigynia < 4x as long as wide.

fsus.ncbg.unc.edu

Continued integration and collaboration



Index of Heliophily (sun-lovingness)



Flora of the Southeastern United States
Edition of April 24, 2022

by
Alan S. Weakley and the Southeastern Flora Team*
University of North Carolina at Chapel Hill Herbarium (NCU)
North Carolina Botanical Garden
University of North Carolina at Chapel Hill
Campus Box 3280
Chapel Hill NC 27599-3280

Produced from the FloraManager database system
by Michael T. Lee

